



## **2019 Novel Coronavirus (2019-nCoV)**

Update as of Thursday, February 6<sup>th</sup>, 2020

We continue to monitor the outbreak of the 2019 Novel Coronavirus (2019-nCoV), and in conjunction with the HDOH and CDC want to make sure you have the most up to date information available. Please see the attached Medical Advisory from the HDOH dated February 3, 2020.

**If you suspect that your patient falls under the criteria for a Patient Under Investigation (PUI), (<https://www.cdc.gov/coronavirus/2019-nCoV/hcp/clinical-criteria.html>) please do the following immediately:**

**1) Contact the Hawaii Department of Health's (HDOH):**

Oahu Disease Outbreak Control Division	(808)586-4586
Maui District Health Office	(808)984-8213
Kauai District Health Office	(808)241-3563
Big Island District Health Office (Hilo)	(808)933-0912
Big Island District Health Office (Kona)	(808)322-4877
After hours on Oahu	(808)600-3625
After hours on Neighbor Islands	(800)360-2575 (toll free)

**2) HDOH will assist with determining the next step and the process for specimen collection if necessary.**

**PLEASE DO NOT SEND YOUR PATIENTS TO A LABORATORY FACILITY FOR SPECIMEN COLLECTION**

**If HDOH determines that your patient should be tested, HDOH will provide you with the proper forms, DOH Form 81.3 and the CDC PUI Form, for submission with your specimens.**

**At this time, only nasopharyngeal (NP) specimens are being accepted by the HDOH and all specimens should be collected in your office and sealed properly. HDOH is asking the following to be ordered for PUI patients:**

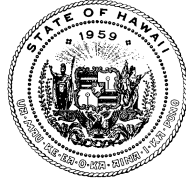
**(1) One M4RT specimen for respiratory viral panel testing at the lab – utilize the CLH lab requisition. This will be billed to the patient/patient insurance.**

**Notate on the requisition “ PUI -RESPCR”. Place in specimen bag.**

**(2) One M4RT specimen to SLD to be tested for 2019-nCoV with DOH and CDC forms Place in separate specimen bag labeled to DOH.**

**3) If you are a part of a hospital or clinic system, please notify infection control immediately of any suspected case and follow your in-house guidelines.**

If you have additional questions please contact the HDOH at the numbers listed above or CLH Client Services at (808)677-7998 (Oahu) or 1(866)281-6816 (toll free).



STATE OF HAWAII  
DEPARTMENT OF HEALTH  
P. O. BOX 3378  
HONOLULU, HI 96801-3378

In reply, please refer to:  
File:

February 3, 2020

**MEDICAL ADVISORY: UPDATE AND GUIDANCE ON OUTBREAK OF  
2019 NOVEL CORONAVIRUS (2019-nCoV)**

Dear Healthcare Provider:

We are providing interim guidance for clinicians to assist in identifying and assessing patients who may be infected with novel coronavirus (2019-nCoV) originally detected in Wuhan City, Hubei Province, China.

Clinicians should ask:

- Does the person have fever or symptoms of lower respiratory infection, such as cough or shortness of breath?

AND

- Has the patient traveled to mainland China within 14 days of symptom onset?

OR

- Has the patient had close contact with a person confirmed with 2019-nCoV infection?

If both exposure and illness are present:

- Place a facemask on the patient and isolate in a private room
- Assess clinical status
- Inform your facility's infection control personnel
- If person meets Patients Under Investigation (PUI) criteria (<https://www.cdc.gov/coronavirus/2019-nCoV/hcp/clinical-criteria.html>), **inform the Hawaii Department of Health immediately** (see numbers below) and **collect two (2) nasopharyngeal (NP) specimens as soon as possible**
  - Send one (1) specimen for respiratory viral panel testing at your clinical lab
  - Send one (1) specimen to SLD to be tested for 2019-nCoV

See the attached flowchart and laboratory specimen collection and processing guidance (<https://www.cdc.gov/coronavirus/2019-nCoV/lab/guidelines-clinical-specimens.html>) for further information.

This guidance is based on current knowledge of the characteristics of clinical illness and the geographic distribution of current cases. However, as you are aware, **this is a rapidly evolving situation**, subject to change as more information/data becomes available. To ensure you are accessing the latest information, please visit HDOH's clinicians' page at: <https://health.hawaii.gov/docd/for-healthcare-providers/news-updates/> or the Centers for Disease

**\*\* This message contains privileged communication between the Department of Health and clinicians and should not be shared with or forwarded to those not included among the original recipients. \*\***

Control and Prevention 2019 Novel Coronavirus website at:  
<https://www.cdc.gov/coronavirus/2019-ncov/index.html>

As this international outbreak continues to evolve, it is critical that all healthcare providers continue to emphasize the importance to patients and the public of basic respiratory disease prevention and infection control practices including:

- Get your flu shot.
- Wash your hands often with soap and water for at least 20 seconds, especially after going to the bathroom; before eating; and after blowing your nose, coughing, or sneezing.
- If soap and water are not readily available, use an alcohol-based hand sanitizer with at least 60% alcohol. Always wash hands with soap and water if hands are visibly dirty.
- Avoid touching your eyes, nose, and mouth with unwashed hands.
- Avoid close contact with people who are sick.
- Stay home when you are sick.
- Cover your cough or sneeze with a tissue, then throw the tissue in the trash.
- Clean and disinfect frequently touched objects and surfaces using a regular household cleaning spray or wipe.

***Providers should notify infection control personnel and HDOH's Disease Outbreak Control Division immediately if any patients meet PUI criteria for 2019-nCoV.***

If you have any questions or need to report a PUI, please contact HDOH at one of the numbers below. If you know providers who are not receiving this medical advisory directly and would like to be added to our distribution list, please email DOH.EPI1 with name, contact email and telephone, and medical specialty.

Oahu (Disease Reporting Line).....	(808) 586-4586
Maui District Health Office.....	(808) 984-8213
Kauai District Health Office.....	(808) 241-3563
Big Island District Health Office (Hilo).....	(808) 933-0912
Big Island District Health Office (Kona).....	(808) 322-4877
After hours on Oahu.....	(808) 600-3625
After hours on neighbor islands.....	(800) 360-2575 (toll free)

We appreciate your assistance in protecting our community.

Sincerely,



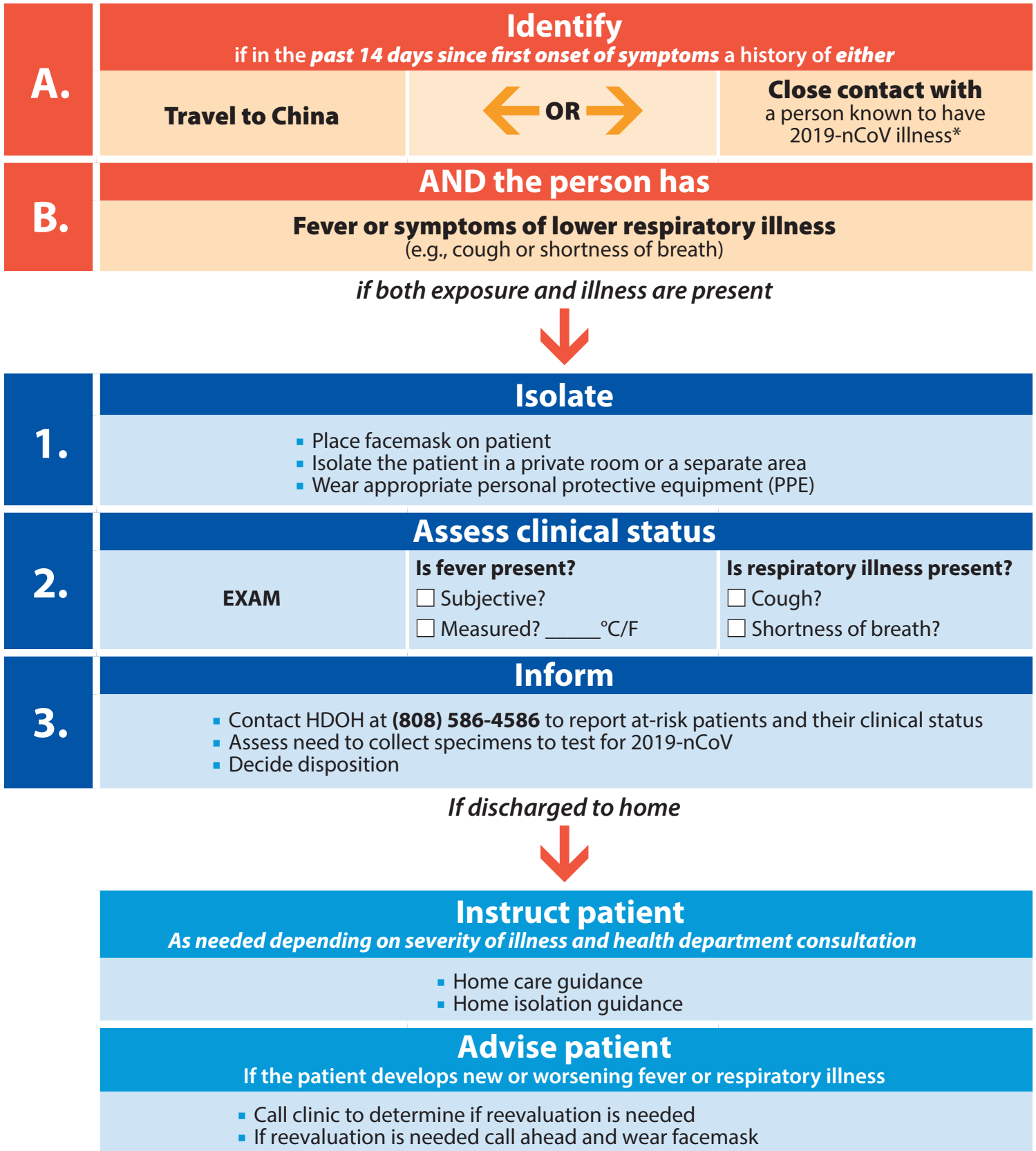
Sarah Y. Park, MD, FAAP  
State Epidemiologist

Attachment

**\*\* This message contains privileged communication between the Department of Health and clinicians and should not be shared with or forwarded to those not included among the original recipients. \*\***

# Flowchart to Identify and Assess 2019 Novel Coronavirus

For the evaluation of patients who may be ill with or who may have been exposed to 2019 Novel Coronavirus (2019-nCoV)



\* Documentation of laboratory-confirmation of 2019-nCoV may not be possible for travelers or persons caring for patients in other countries. For more clarification on the definition for close contact see CDC's Interim Guidance for Healthcare Professionals: [www.cdc.gov/coronavirus/2019-nCoV/hcp/clinical-criteria.html](http://www.cdc.gov/coronavirus/2019-nCoV/hcp/clinical-criteria.html)